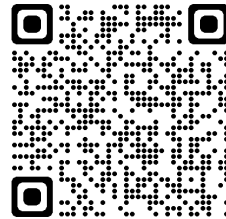
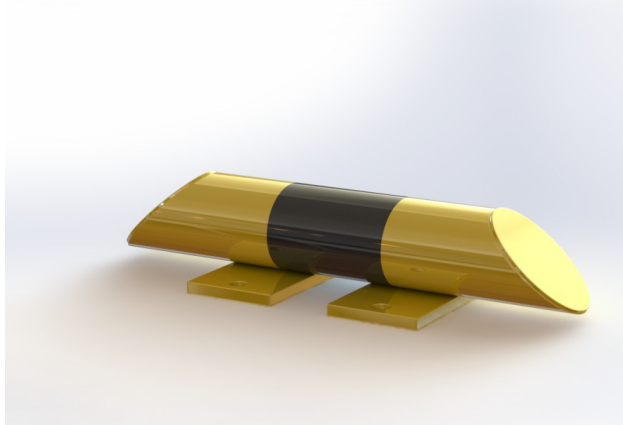




Technical sheet



Low level protection barrier – DP OW01

PROPERTIES:

Material: steel

Colour: yellow / reflective black

Handling equipment: electric pallet jack

Impact resistance: increased

Diameter: 76 mm

Length: 400 mm

Height: 86 mm

Wall thickness: 3 mm

Foot dimension: 150 × 75 × 10 mm

Weight: 4 kg

Surface treatment: powder paint

Suitable use: indoor and outdoor areas

PRODUCT DESCRIPTION:

The low level protection barrier is made of S235 steel. Surface treatment is solved with powder paint. Yellow traffic colour RAL1023 increases the visibility of the barrier and warns of obstacles, which contributes to greater safety. The steel feet of the barrier are made of 10 mm thick sheets. Fixing holes Ø 14 mm. The barrier has black reflective stripes.

USE:

The low level protection barrier defines the space for the movement of hydraulic handling equipment, pallet trucks and sack trucks. The low level protection barriers are designed to protect machines and equipment in production halls and warehouses.